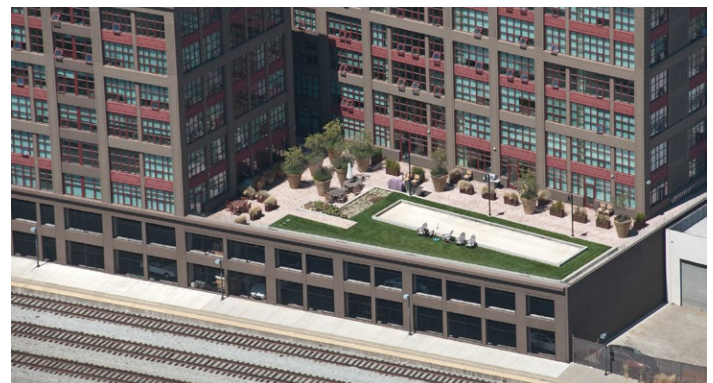


# AQUA VIA

Oakland, CA  
Embarcadero Pacific



20030050 - Photography © Christopher Mayer

## Typology

Apartments  
Podium

## Facts

Density: 135 du/ac  
Unit Plan Sizes: 752-1,327 sq. ft.  
Number of Units: 100 du  
Site Area: .74 ac

Number of Stories: 8  
Parking: 133 spaces (1.33 sp./unit)  
Construction Type: I

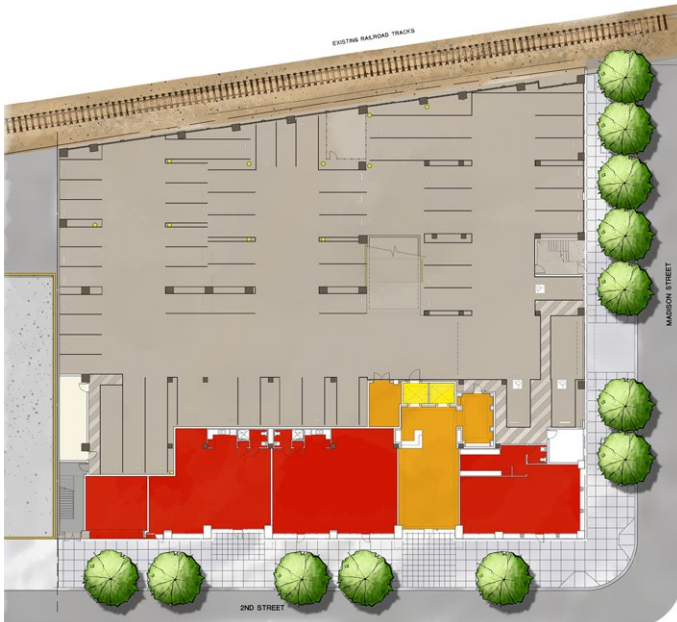
## Awards

2006 Builder's Choice Awards

Located in the Jack London Square neighborhood of Oakland, Aqua Via offering eight stories of loft-style apartments, fits in perfectly with the neighboring industrial and warehouse buildings. While being respectful of its context the building leaves no doubt that is a contemporary residential development. Efficiently constructed, Aqua Via uses poured in place concrete as both its structure and its aesthetic. As a simple statement, this building builds on the warehouse mentality of utility and economy while also achieving a high degree of luxury.

# AQUA VIA

Oakland, CA  
Embarcadero Pacific



Retail / Parking Structure Level



Typical Residential Level