

COVO

Los Angeles (Silverlake), CA
Planet Home Living



20130804 - Photography © Chang Kyun Kim

Typology

Small Lot Single-Family Detached

Facts

Density: 21.4 du/ac

Unit Plan Sizes: 2,000 sq. ft.

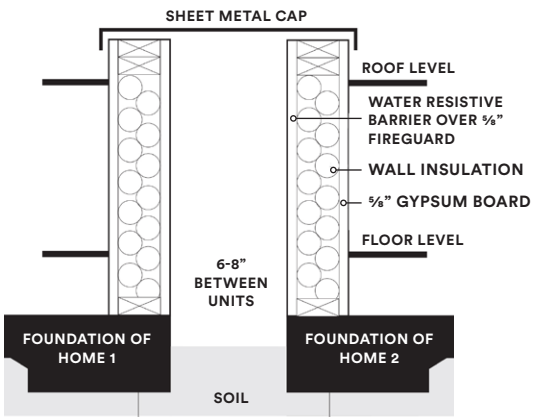
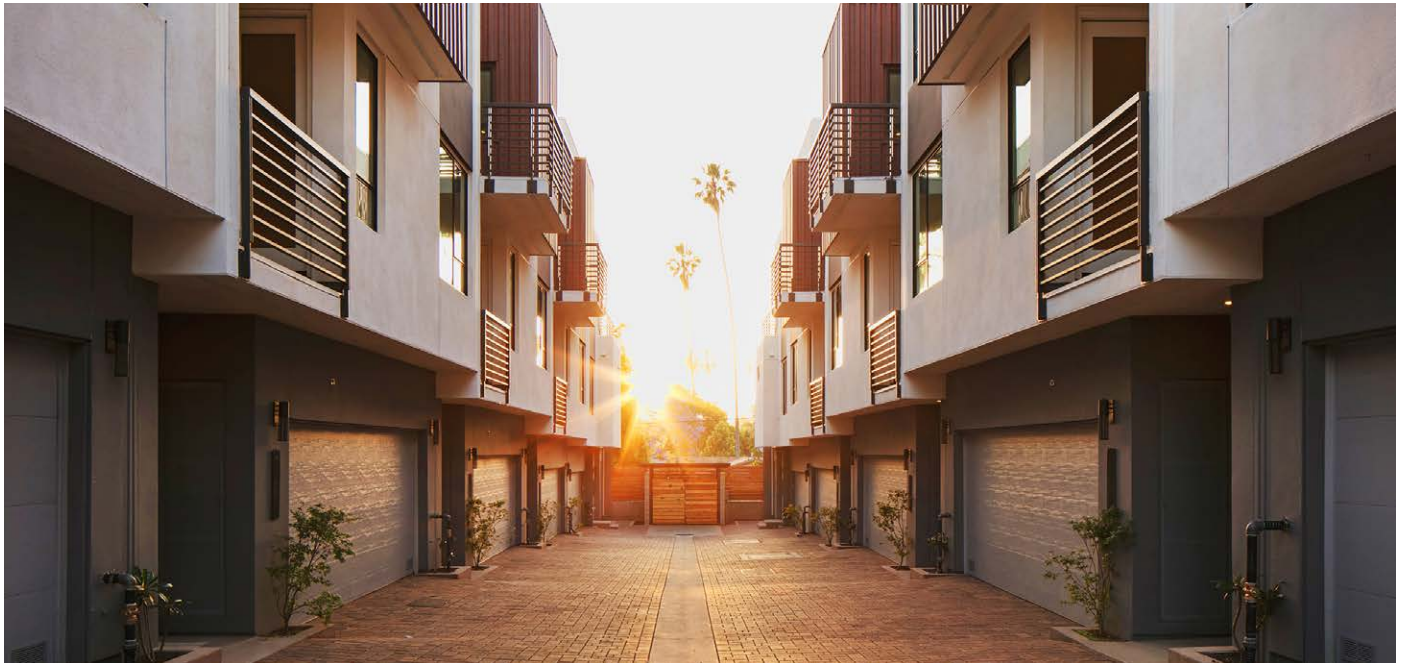
Number of Homes: 10 du

Site Area: 0.35 ac

COVO is a creative infill solution under the Small Lot Ordinance that responds to its neighborhood context in the heart of Silver Lake. This intimate enclave of ten single-family detached homes with iconic palm tree lined views and walkability offers contemporary urban living for home buyers who crave hip cafes, restaurants and entertainment, and proximity to work, schools, transit and shopping, but don't want a condo or Craftsman bungalow. The industrial inspired, front-loaded design provides private rear yard space, perfect for pets; and the open floor plan and large expanses of glass allow residents to live large in a smaller footprint. With decks at each level and a spacious private roof deck, residents get to enjoy distant vistas and plenty of additional outdoor space. Enhanced paving and landscape at drive aisle lets vehicle and pedestrian traffic co-mingle, reminiscent of the cobble stone streets typically found in Europe.

COVO

Los Angeles (Silverlake), CA
Planet Home Living



SEPARATE FOUNDATION FOR EACH HOME

CROSS SECTION OF AIRSPACE SEPARATING HOMES

