



Landsdowne at Bay Meadows

Client

Shea Homes

Location

San Mateo, CA

Use

On-Grade Townhomes

Facts

- Density - 23 DU/AC
- Unit Plan Sizes - 1,237-2,353 SF
- Number of Units - 93 DU
- Site Area - 4.04 AC

Awards

2014 BIA Bay Area Excellence in Home Building Awards

- Award Winner
- Finalist

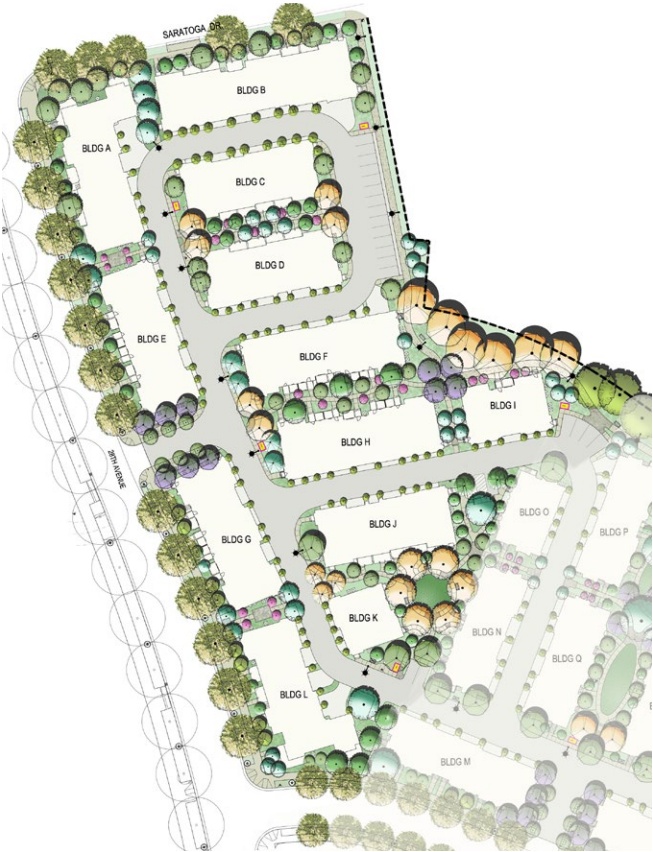


20070058 - Photography © Christopher Mayer & Gary Belinsky

Set adjacent to a Caltrain commuter rail station, Landsdowne at Bay Meadows is an exciting collection of 2-3 story townhomes in an outstanding San Francisco peninsula setting, just minutes from shopping, dining, entertainment, business centers and commute routes. Covering four acres, Landsdowne features eight floor plans with a mix of two-, three- and four-bedroom homes ranging from 1,237 up to 2,353 sq. ft., and includes a private garage, which is entered from behind the home. The historic precedent of an “Early American Arts and Crafts movement” influenced Landsdowne’s design, which is seen in the design’s mix of lap siding and exterior plaster along with broad eaves articulated with wood detailing. The homes’ interiors are calm and comfortable with a rich mix of materials and colors. The residences are oriented towards the lush greenery of Bay Meadows’ 12-acre park. The greenery of the park extends to Landsdowne’s landscaped paths, gathering places and private courtyards. The townhomes include porches and balconies to enjoy Bay Meadow’s vibrant outdoor experience.



Architecture+Planning
888.456.ktgy ktgy.com



Landsdowne at Bay Meadows



Architecture+Planning
888.456.ktgy ktgy.com