



## Skylar at Playa Vista

**Client**  
KB Home

**Location**  
Playa Vista, CA

**Use**  
For Sale Stacked Flats

- Facts**
- Density - 19.3 DU/AC
  - Unit Plan Sizes - 1,923-2,485 SF
  - Number of Units - 93 DU (3 DU/Building)
  - Site Area - 4.72 AC
  - LEED Platinum Certified (with 95 Points)



### Awards

- 2015 MFE Awards
- Grand Award

- 2015 Gold Nugget
- Two Grand Awards

- 2015 NAHB Best in Green Awards
- Award Winner

- 2015 Best in American Living
- Two Platinum Awards

- 2015 NAHB Best of 50+
- Two Gold Awards
- Two Silver Awards
- Innovation Award

- 2014 SAGE
- Award Winner

- 2014 NAHB Pillars of the Industry
- Award Winner

- 2014 Multi-Housing News
- Gold Award



20120439 © Applied Photography

Yesterday's 3-story traditional townhome design has been turned on its side to appeal to the ever-increasing Boomer market and multi-generational families, while maintaining townhome densities. The innovative design yielded 3 single-level living units that incorporate universal design and a semi-private elevator to provide an accessible path to any floor. The ground floor space that was not occupied by the 3 two-car private garages and the building lobby became a flex space that could either be a family room, home office or a multi-generational suite for the flat above. Connected by way of a foyer and stair, the resident also has access to the home's main living floor by way of elevator. This flexibility of living arrangement truly provides a unique solution for buyers of any age, at any stage of life and can be used differently as the resident's needs change over time; allowing for a resident to gracefully age-in-place. LEED Platinum Certification (with 95 points) maximizes market appeal, reduces expenses and optimizes health.



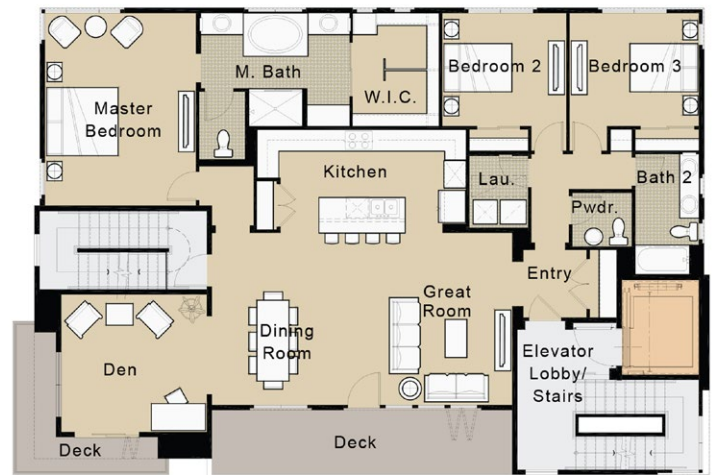
**Architecture+Planning**  
888.456.ktgy ktgy.com



Multi-Generational Unit



Elevator Access



**Plan 1**  
Third Floor  
1,923 S.F.  
3 BR + Den / 2.5 BA

