



The Clubhouse at Poplar Run

Client

Winchester Homes, Inc.

Location

Silver Spring, MD

Use

Clubhouse

Facts

- Building Footprint - 3,400 SF
- Pools & Deck - 67,620 SF
- Site Area - 5 AC
- Building & Pools - 1.6 AC
- Parking - 31,482 SF

Awards

- 2013 GALA Awards
- Award Winner

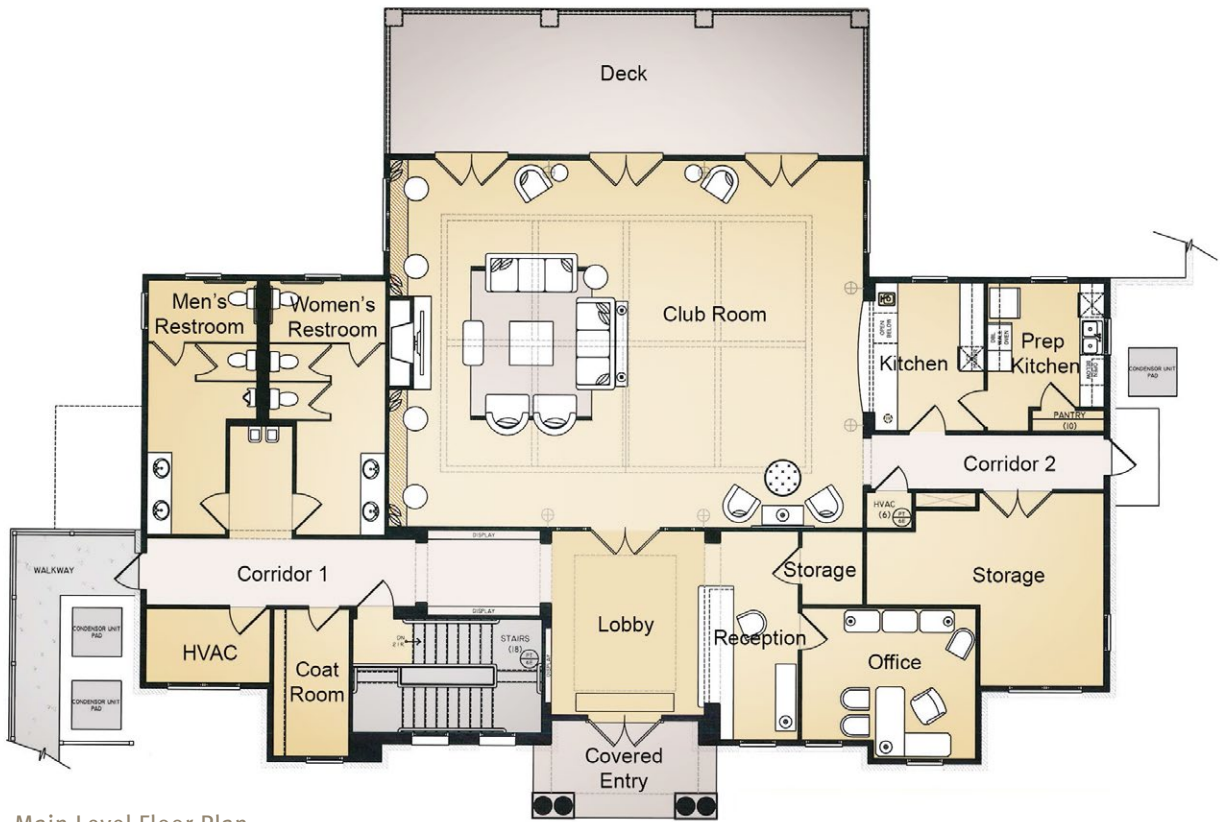


20110206- Photography © KTGy Group, Inc.

The Clubhouse at Poplar Run serves as the gathering destination/recreation area for the over 700-home community. The site is oriented on an axis with an incoming access road to create a strong visual statement. The orientation of the clubhouse capitalizes on the rear views framed by French doors with big circular transoms on the second floor. The lower level is on grade and has direct pool access to the locker rooms and the large multipurpose room. The 6,7000-square-foot clubhouse includes a multi-purpose room, men and women's locker room, reception desk/lifeguard office, vending machines, a covered pavilion and deck, three swimming pools and lounge chairs. Residents can also enjoy spending time in the club room that includes a flat screen TV, comfortable couches and a kitchen to prepare snacks or get a cold drink.



Architecture+Planning
888.456.ktgy ktgy.com



Main Level Floor Plan

