



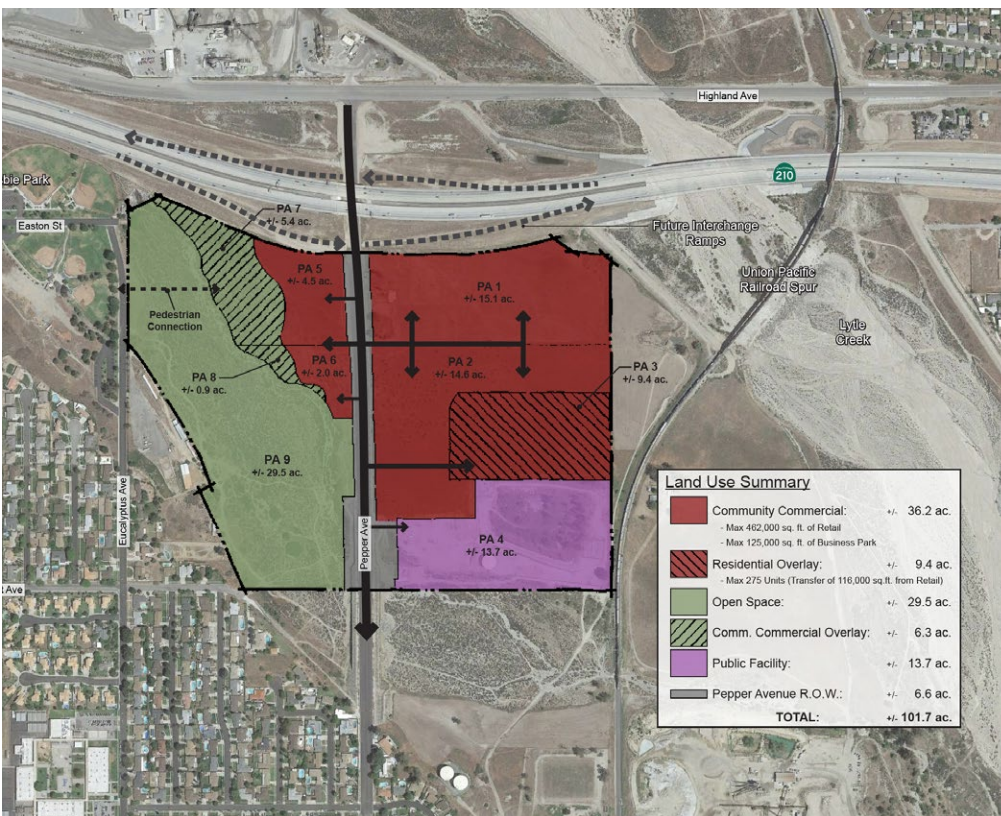
Pepper Avenue Specific Plan

Client
City of Rialto

Location
Rialto, CA

Services
Specific Plan, Consultant Management, City support

Facts
• Land Area – 102 AC



20130702

The City of Rialto selected KTGy to lead a team of planners, environmental consultants, engineers and other consultants to develop the Pepper Avenue Specific Plan. The City initiated this project to take advantage of a new freeway off-ramp anticipated to open in 2016, which will create a new gateway into the City. Almost half of the site consists of protected, natural habitat. At least one fault line, a nearby levee and railroad spur add to the constraints for this project. Part of this process includes facilitation of the project with interested neighbors, a diverse group of property owners and other stakeholders. KTGy recently held an interactive workshop that utilized of Turning Point technology, an interactive, instantaneous, polling software program. The instantaneous results allowed the planning discussions to go deeper into people’s values, wants and desires. The interactive workshop was hailed as a success by the City and resulted in beneficial information for the land use plan, which is currently being finalized.

