



## COVO

### Client

Planet Home Living

### Location

Silverlake, Los Angeles, CA

### Use

Small Lot Single Family Detached

### Facts

- Density - 21.4 DU/AC
- Unit Plan Sizes - 2,000 SF
- Number of Units - 10 DU
- Site Area - 0.35 AC

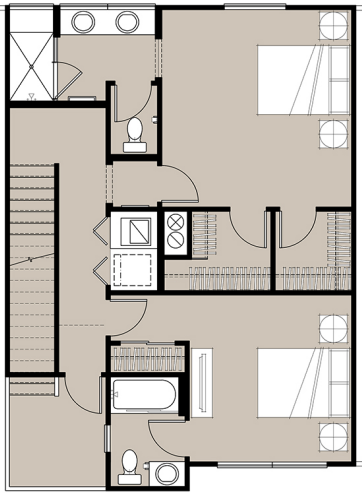


20130804

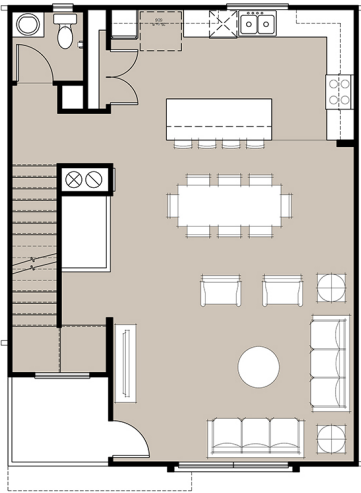
COVO is a creative infill solution under the Small Lot Ordinance that responds to its neighborhood context in the heart of Silver Lake. This intimate enclave of ten single-family detached homes with iconic palm tree lined views and walkability offers contemporary urban living for home buyers who crave hip cafes, restaurants and entertainment, and proximity to work, schools, transit and shopping, but don't want a condo or Craftsman bungalow. The industrial inspired, front-loaded design provides private rear yard space, perfect for pets; and the open floor plan and large expanses of glass allow residents to live large in a smaller footprint. With decks at each level and a spacious private roof deck, residents get to enjoy distant vistas and plenty of additional outdoor space. Enhanced paving and landscape at drive aisle lets vehicle and pedestrian traffic co-mingle, reminiscent of the cobble stone streets typically found in Europe.



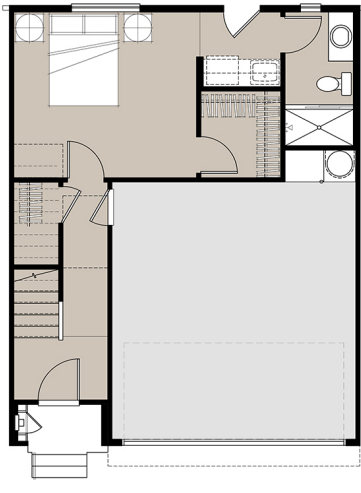
Architecture+Planning  
888.456.ktgy ktgy.com



Third Floor



Second Floor



First Floor