



AVA NoMa

Client

AvalonBay Communities

Location

Washington, DC

Use

Mixed-Use High-Rise Apartments

Facts

- Density - 391 DU/AC
- Unit Plan Sizes - 451-1,340 SF
- Number of Units - 438 DU
- Site Area - 1.12 AC
- Parking - 303 Spaces
- Number of Stories - 13
- Retail - 6,700 SF



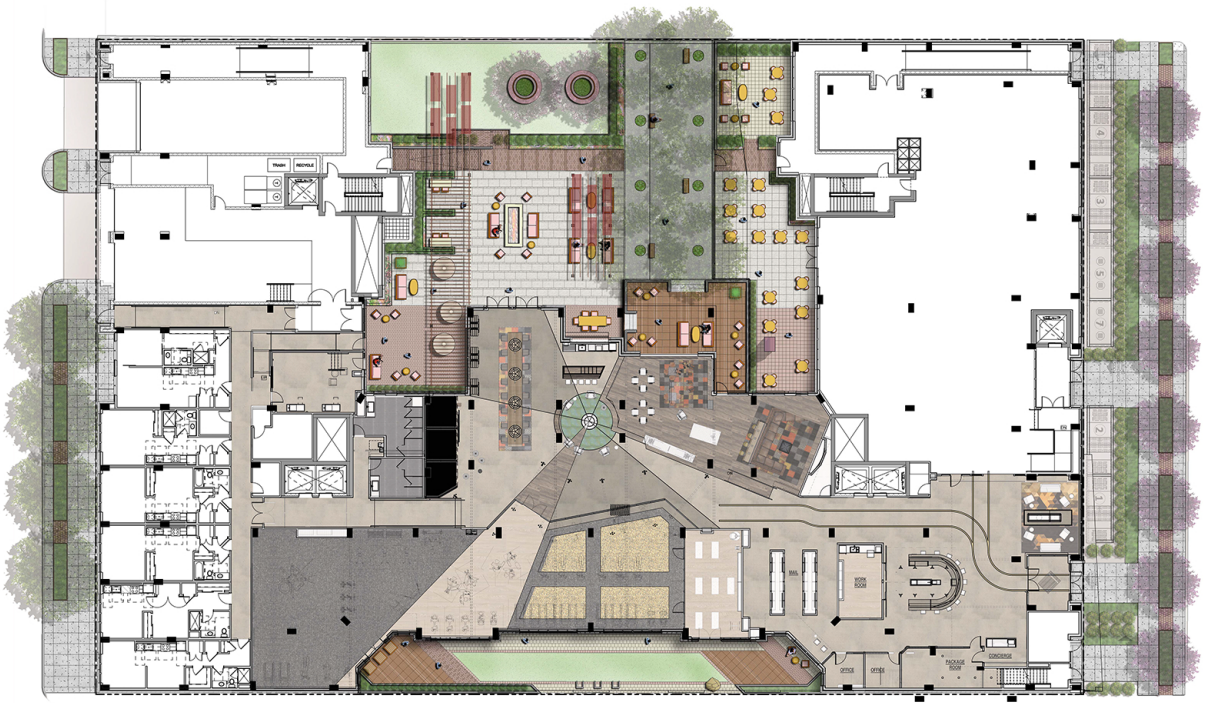
20141112

Short for “North of Massachusetts Avenue,” the newly developed NoMa neighborhood in Washington, DC has quickly become the neighborhood of choice for young professionals who want to be near all the action. With a location just blocks from Capitol Hill and near the hot H Street NE corridor and Union Station, NoMa has been reborn into a lively mix of office, residential, hotel and retail space in a once-forgotten neighborhood. AVA NoMa is an exciting new 13-story urban infill high-rise apartment community that will feature 438 apartment homes and an exciting array of amenities including a first floor lobby, lounge, leasing office, fitness center, dog wash, bike shop, mail and package area, and 6,700 sq. ft. retail Food Court with dining terrace, in addition to a relaxing landscaped resident courtyard. Other community amenities include a rooftop amenity and pool area, and 3 levels of below-grade parking. The unit breakdown is as follows: 65% studios and 1-bedroom apartment homes; 22% 2-bedroom units; and 13% 3-bedroom units. Built as type 1B construction, AVA NoMa will have a Cast-in-place and post-tensioned concrete structural frame with brick veneer and metal panel exterior finishes reminiscent of the warehouse district of the past and the modern style of the present.



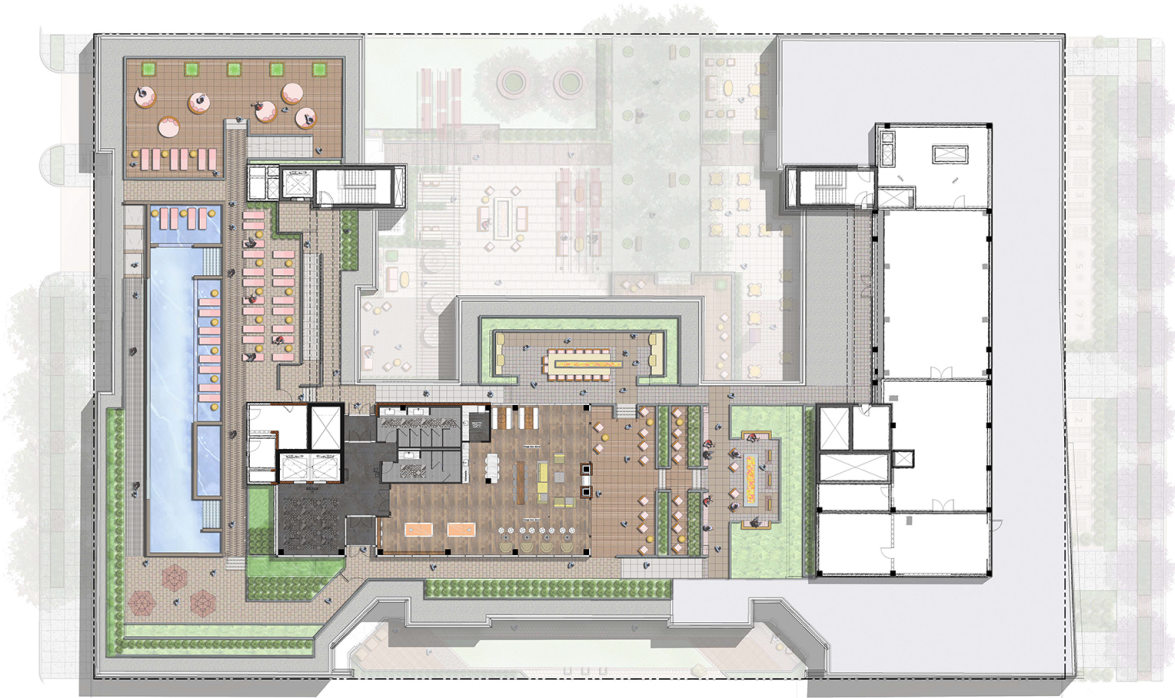
Architecture+Planning
888.456.ktgy ktgy.com

Pierce Street NE



M Street NE

First Floor



Roof Plan