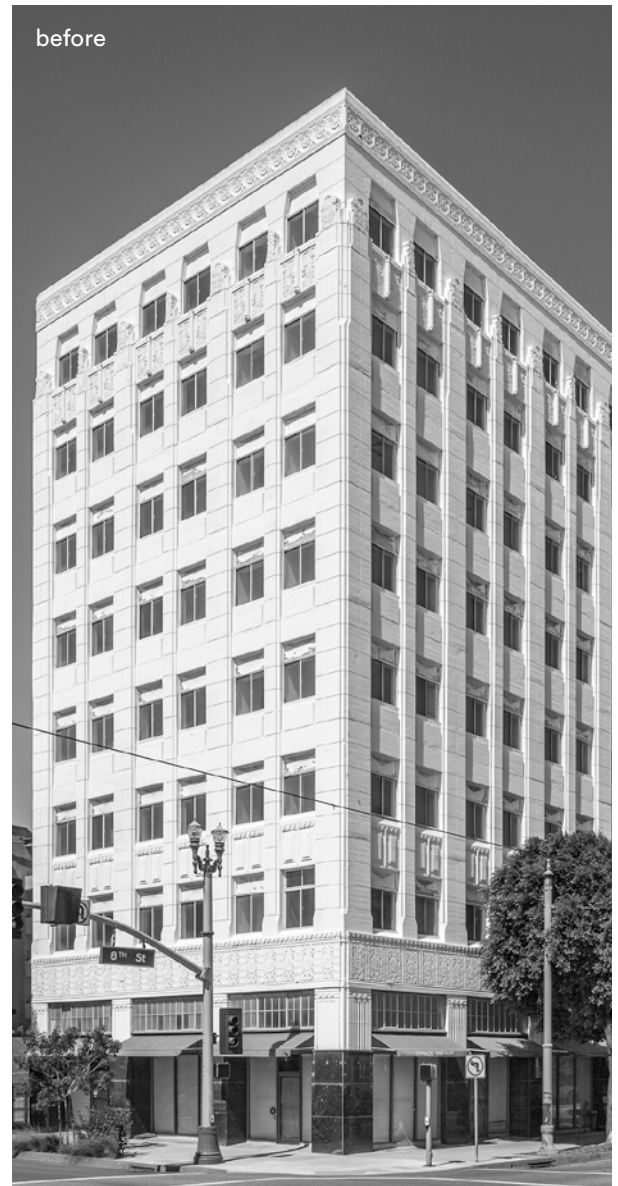


# REGENCY PALMS

Long Beach, CA  
Global Premier Development



## Typology

Assisted Living  
Memory Care

## Facts

Unit Plan Sizes: 256 - 593 sq. ft.

Assisted Living Units: 78 du (52 beds)

Memory Care Units: 24 du (30 beds)

Parking: 46 spaces

Number of Stories: 10

Construction Type: I

Renovating and restoring a 1920s office building, Regency Palms delivers 102 assisted living and memory care units with impeccable craftsmanship. With retail and medical at the ground level, Regency Palms is designed to invite the public in, deepening the residents' connection to the community. With an emphasis on building relationships, this senior living community is planned so residents have vibrant common living areas that combine with the retreat of private rooms to make a home. The walkable neighborhood and its location next to the Los Angeles Metro's Blue Line connects residents to Downtown Los Angeles and the greater region.

# REGENCY PALMS

Long Beach, CA  
Global Premier Development

